

GC mower 82V Service and repair information

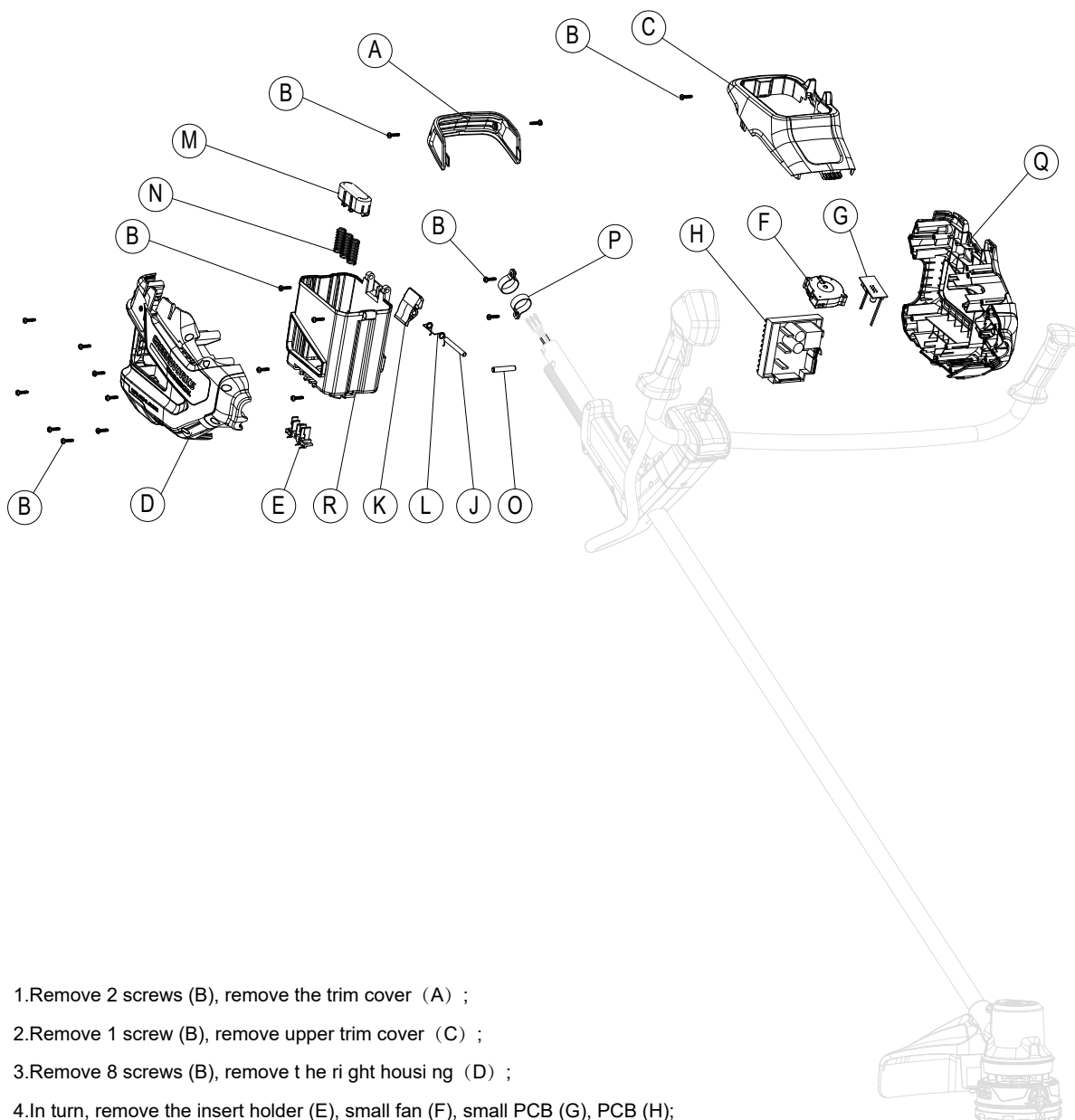


Table of Contents

No.	Name	Page
1	Disassembly of the rear housing assembly	2
2	Disassembly of the bullhorn tower assembly	3
3	Removing the handle assembly	4
4	Removal of shield assembly	5
5	Disassembly of the head assembly	6
6	Installation of head assembly	7
7	Installing the handle assembly	8
8	Installation of bullhorn tower assembly	9
9	Installing the rear housing assembly	10
10	Installing the shield assembly	11
11	Wiring Diagram	12

1 Disassembly of the rear housing assembly

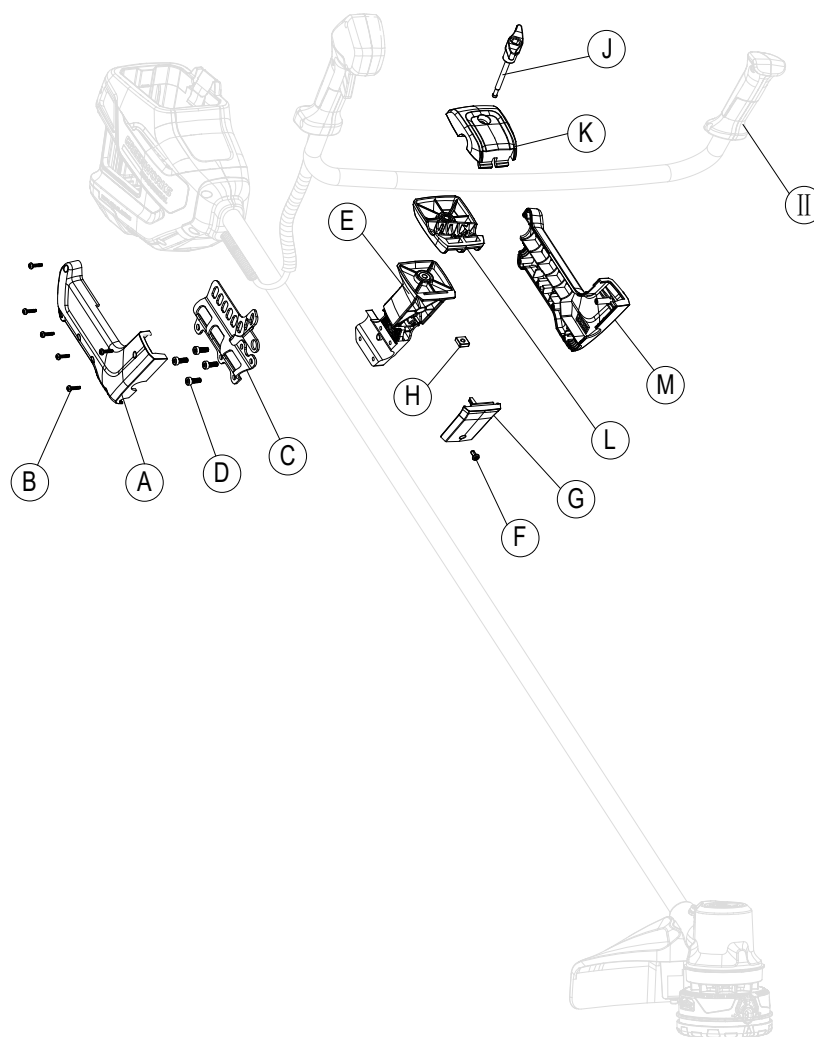
Disassembly of the rear housing assembly



- 1.Remove 2 screws (B), remove the trim cover (A) ;
- 2.Remove 1 screw (B), remove upper trim cover (C) ;
- 3.Remove 8 screws (B), remove the right housing (D) ;
- 4.In turn, remove the insert holder (E), small fan (F), small PCB (G), PCB (H);
- 5.Remove the 4 screws (B), remove the battery pack barrel (R), then remove the button shaft (J), button (K), torsion spring (L) , spring seat (M), and 3 springs in sequence (N) ;
- 6.Remove 2 screws (B), remove the locating pin (O), 2 clamps (P), and the left housing (Q).

2 Disassembly of the bullhorn tower assembly

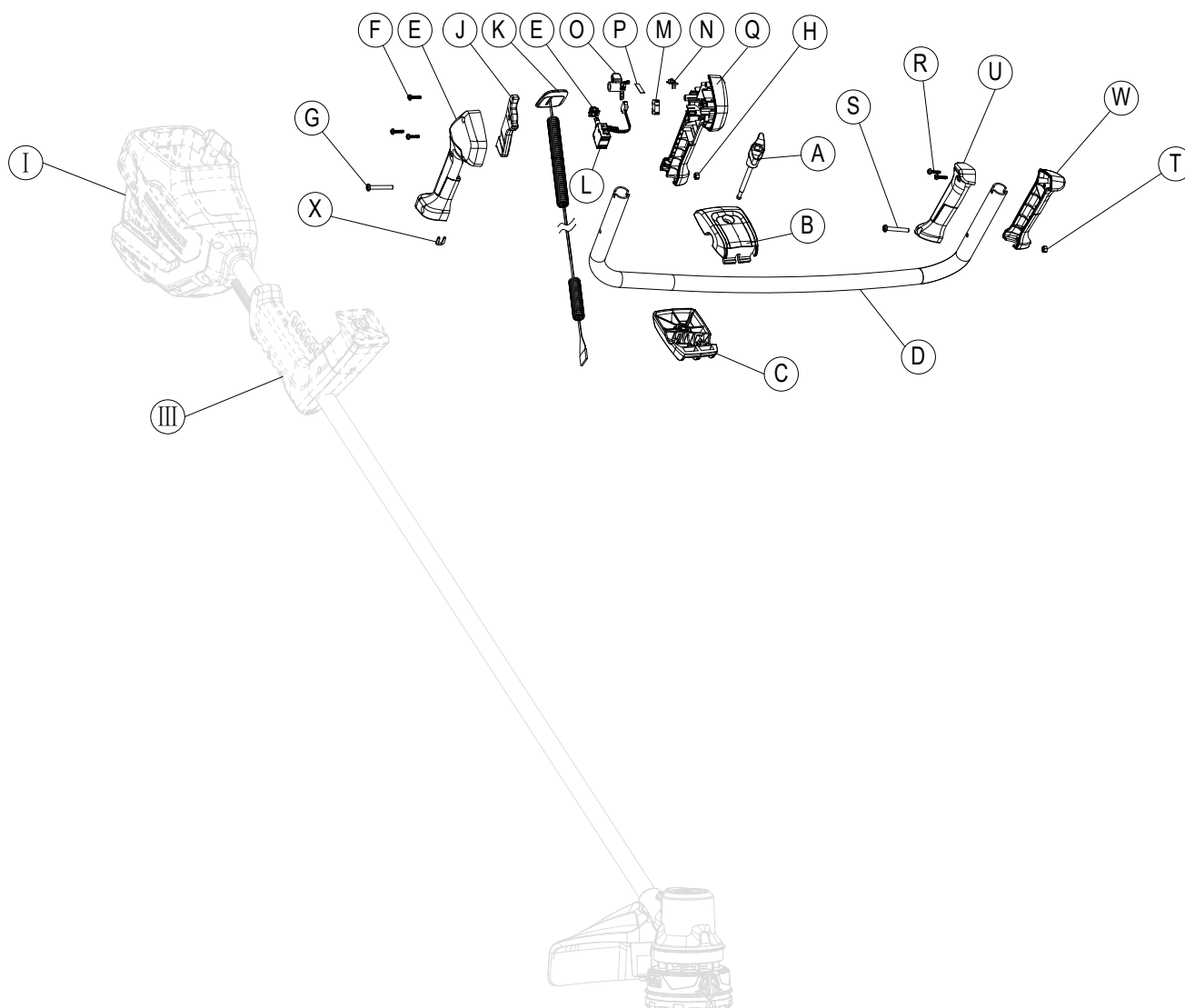
Disassembly of the bullhorn tower assembly



- 1.Remove the screw cap (J), remove the upper cover (K), the handle assembly (II), and the lower cover of the horn tower in turn (L)
- 2.Remove 6 screws (B), remove the right housing of the bullhorn tower (A);
- 3.Remove 4 screws (D), remove pressure plate (C), left housing of bullhorn tower (M), bullhorn tower bracket (E) ;
- 4.Remove the screw (F), remove the cowl tower trim cover (G), square nut (H) .

3 Removing the handle assembly

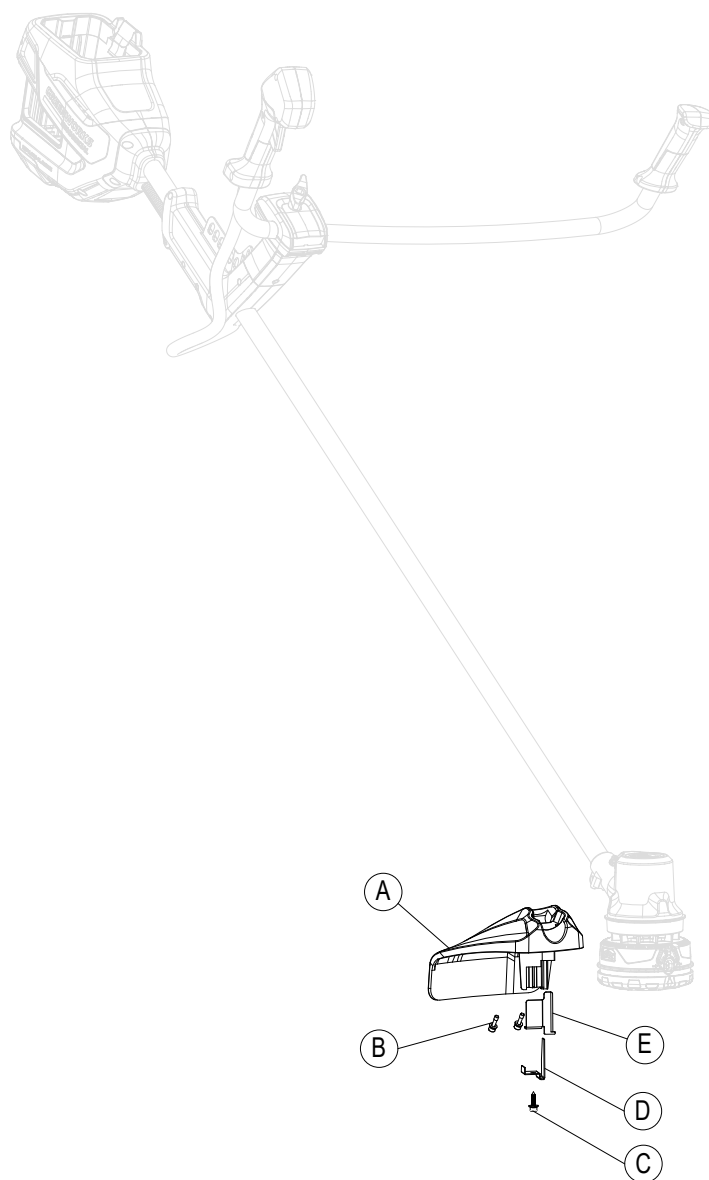
Removing the handle assembly



- 1.Remove rear housing assembly (I), bullhorn tower assembly (III) ;
- 2.Remove the screw cap (A), remove the upper cover (B), the aluminum tube (D), and the lower cover of the bullhorn tower in turn (C) ;
- 3.Remove 3 screws (F), bolts (G), nuts (H), remove U-shaped clips (X), and bullhorn main handle Handle right housing (E) ;
- 4.依Sub-disassembly switch board machine (J), membrane panel assembly (K), speed control switch (L), micro switch (M),
small PCB (N), toggle (O), spring plate (P), bullhorn main handle left housing (Q) ;
- 5.Remove 2 screws (R), bolts (S), nuts (T), remove the right housing (U) and left housing of the bullhorn vice handle (W) .

4 Removal of shield assembly

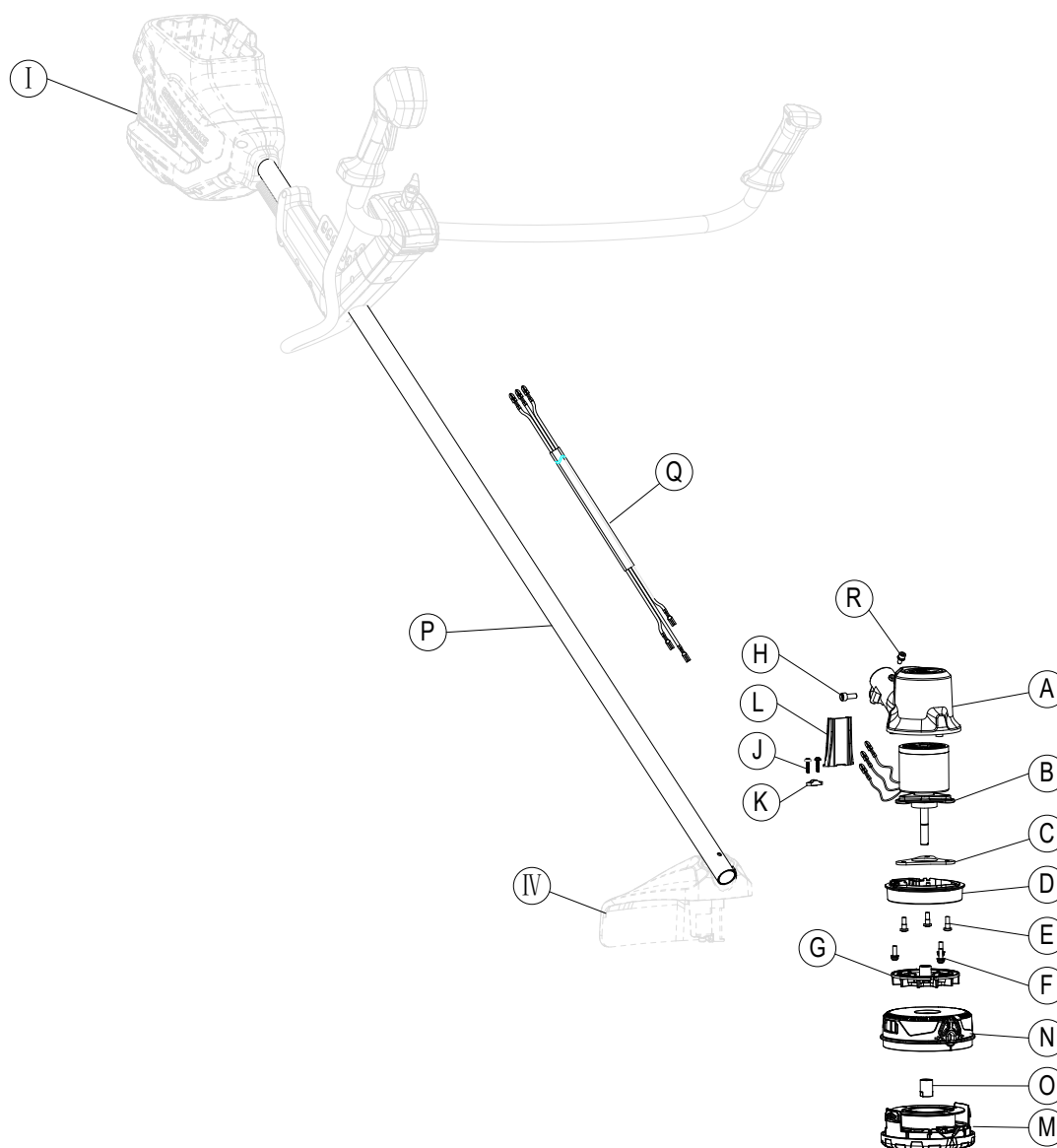
Removal of shield assembly



- 1.Remove 2 screws (B), remove the shield (A) ;
- 2.Remove 1 screw (C), remove blade holder (D), blade in turn (E) ;

5 Disassembly of the head assembly

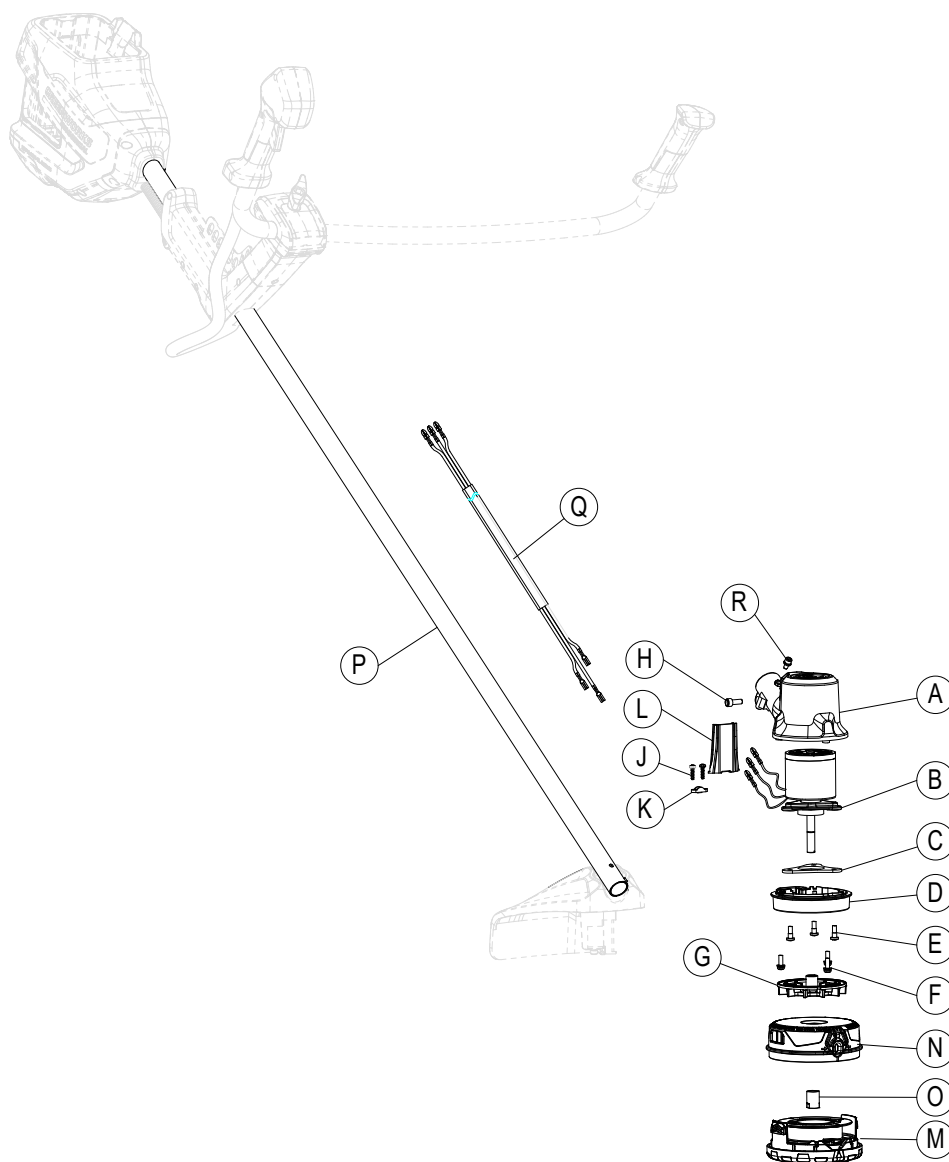
Disassembly of the head assembly



- 1.Remove rear housing assembly (I), shield assembly (IV);
- 2.Remove 1 screw (R), 1 screw (H), remove the housing (A) from the rod (P), and disconnect the spring wire (Q) ;
- 3.Remove the bobbin cover (M), remove the spinning cap (O), remove the grass head base (N), and remove the air blade(G);
- 4.Remove 3 screws (F), remove base (D) assembly, air guide(L);
- 5.Remove the 2 screws (J), remove the pressure plate(K);
- 6.Remove 3 screws (E), rubber pad (C), motor(B)。

6 Installation of head assembly

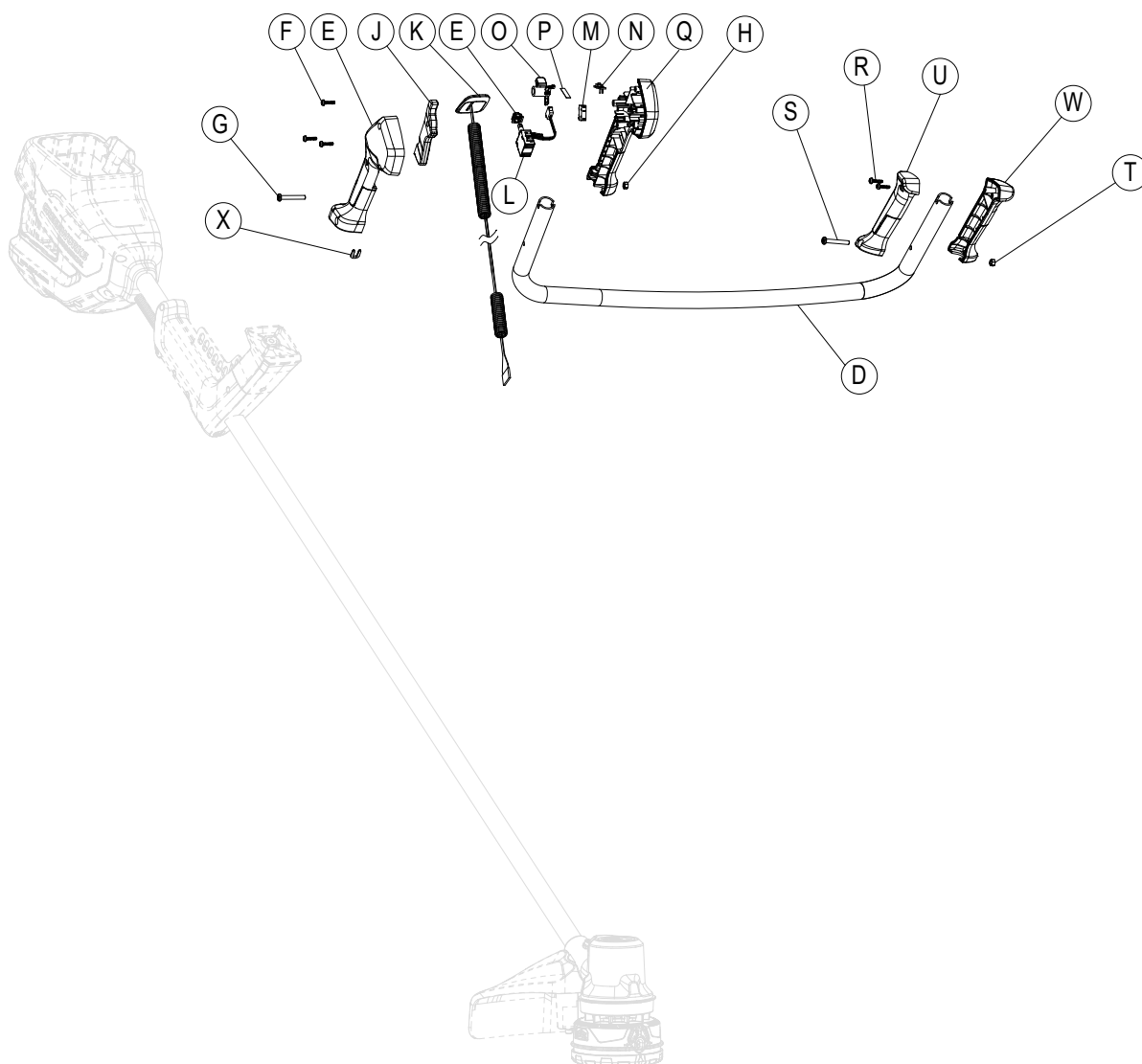
Installation of head assembly



1. Put the rubber pad (C) on the motor (B); then place it on the base (D), put in 3 screws (E) to lock it.
 nail (E) to lock, and then organize the wire will be pressure plate (K) installed, and fixed with two screws (J);
2. Install the air guide (L) into the housing (A), then install the installed motor into the housing (A), close the base (D),
 and lock it with 3 screws (F);
3. Connect the male terminal of the spring wire (Q) to the female terminal of the motor inside the housing;
4. Put the air blade (G) and grass head base (N) on the motor, then put on the screw cap (O) and lock it tighten
5. Thread the housing assembly (V) into the rod (P), align the holes, then thread 1 screw (R), 1 screw (H) and lock it tightly,
 and finally install the upper coil cover (M)

7 Installing the handle assembly

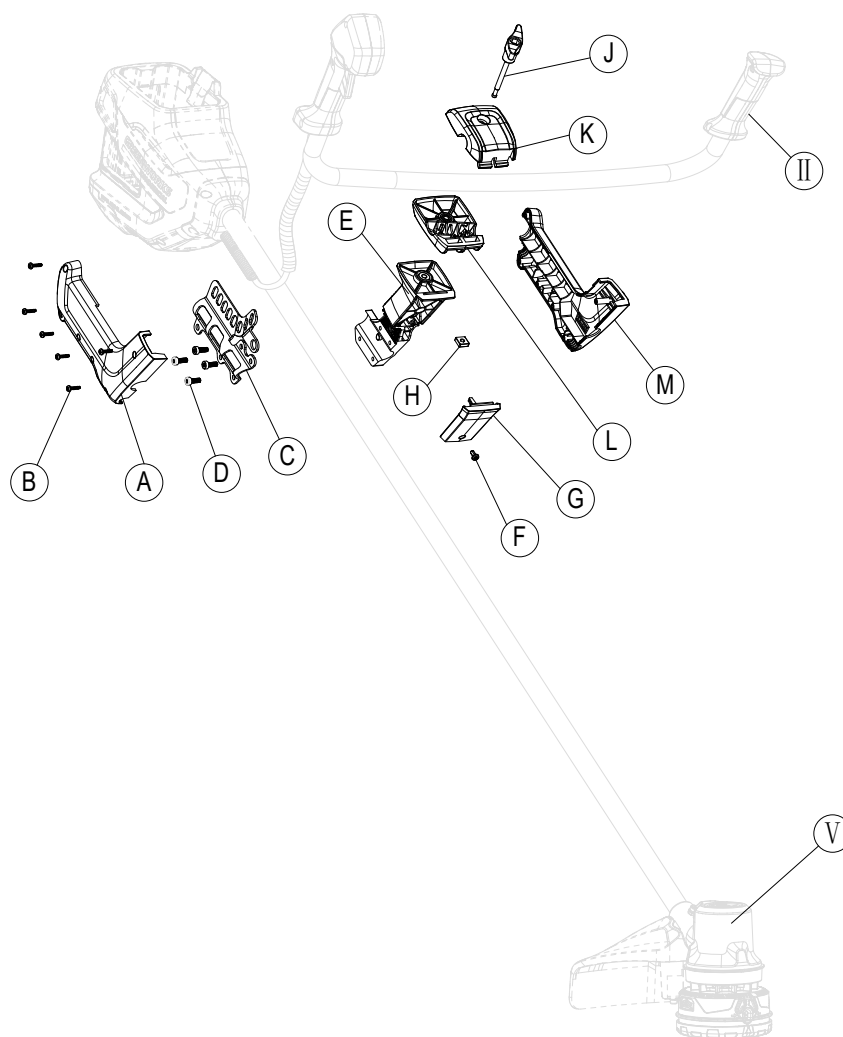
Installing the handle assembly



1. Install the right housing (U) and left housing (W) of the bullhorn sub-handle to the aluminum tube (D), and then install 2 screws (R), bolts (S) and nuts (T) in turn and lock them tightly;
2. Install the membrane panel assembly (K), speed switch (L), micro switch (M), small PCB (N), toggle (O), spring plate (P), switch plate machine (J) on the left housing of the main handle of the bullhorn (Q), organize the line and then fit the rod of the head assembly (A);
3. Cover the bullhorn main handle right housing (E), then install three screws (F), bolts (G), nuts (H) and lock tight, and finally snap in the U-shaped snap (X) to the handle assembly.

8 Installation of bullhorn tower assembly

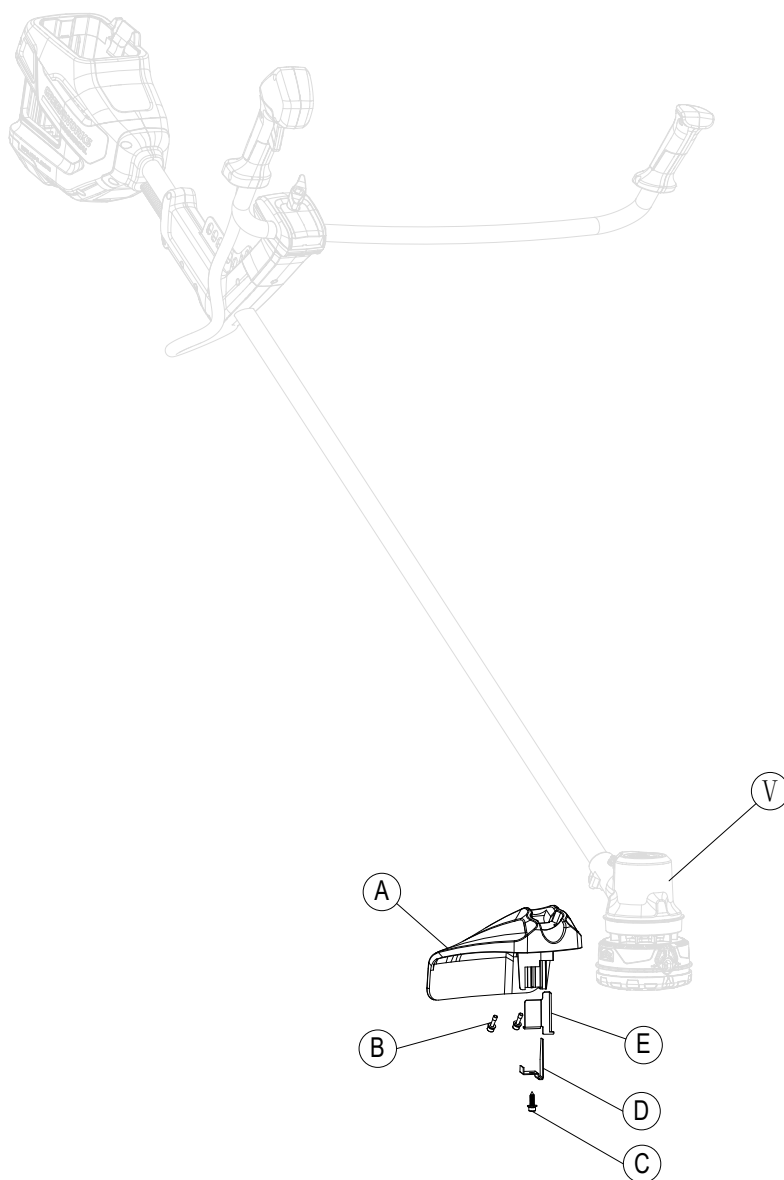
Installation of bullhorn tower assembly



1. Install the handle assembly first (II) ;
2. Attach the square nut (H) to the cowl tower bracket (E), cover the cowl tower trim cover (G), and lock it with the screw (F);
3. Install the installed bullhorn tower bracket (E) to the left housing of the bullhorn tower (M), organize the line and then fit it to the rod of the head assembly (V);
4. Cover the pressure plate (C) and lock it with 4 screws (D);
5. Cover the right housing of the cowl tower (A) and lock it with 6 screws (B);
6. Install the lower cover (L) of the bullhorn tower to the bullhorn tower assembly (III), then install the handle assembly (II), the bullhorn tower upper cover (K), then thread in the screw cap (J) and lock.

10 Installing the shield assembly

Installing the shield assembly



1. Install the housing assembly first (V);
2. Install the blade (E), blade holder (D) to the guard (A) in turn and lock it with 1 screw (C);
3. Fit the assembled shield (A) to the head assembly (V) and lock it with 2 combination screws (B)

11 Wiring Diagram

Wiring Diagram

