

Chainsaw  
2024802 82CS27  
Service and repair information

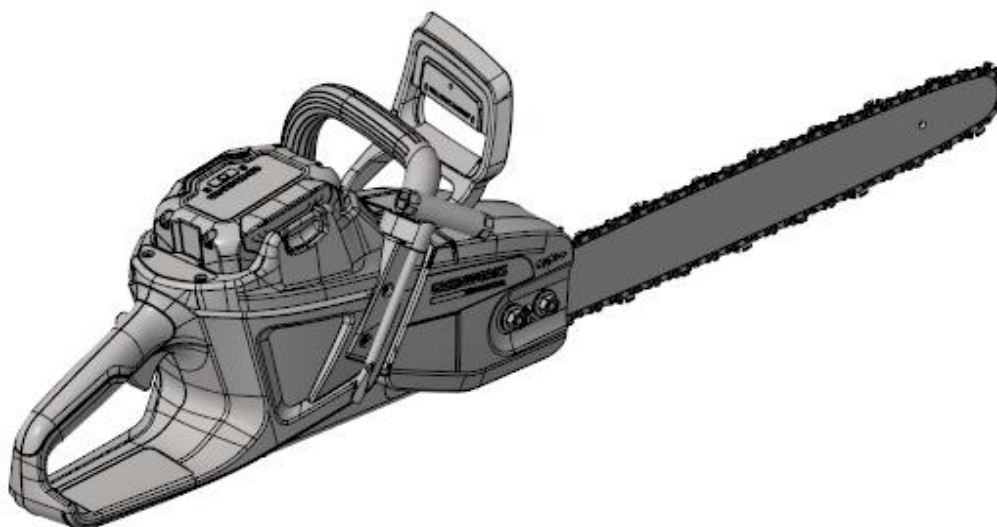
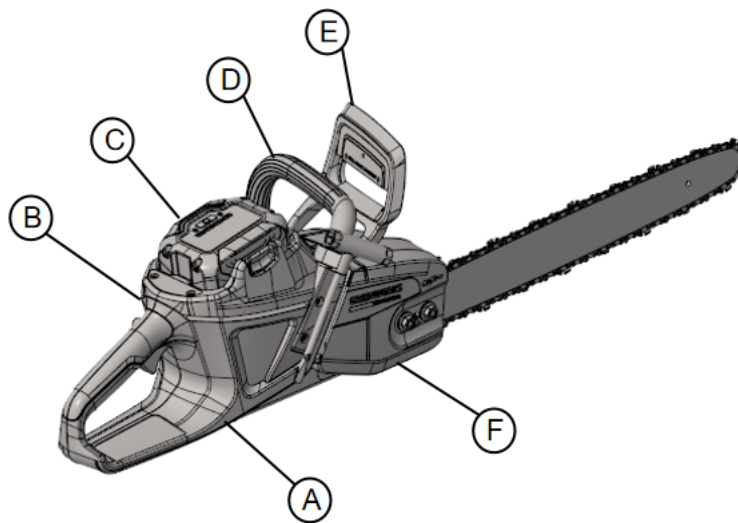


Table of contents

No.	Name	Page
1	Component location	2
2	Preparations	3
3	Chain disassembly	4
4	Chain assembly	6
5	Motor disassembly	8
6	Motor assembly	9
7	Battery box	10
8	Oil tank	11
9	PCB	12
10	Triggers and Potentiometers	13
11	Lubrication	14
12	Wiring diagram	15

# 1 Component location

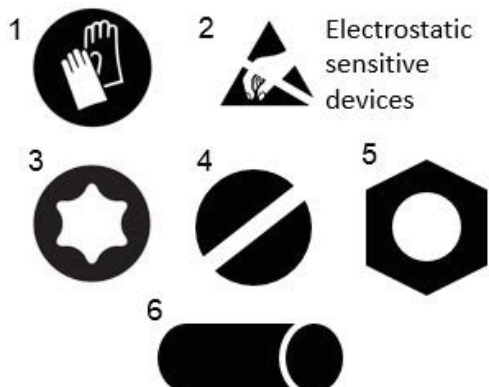
## Component locations



- A) Cover right
- B) Cover left
- C) Battery box
- D) Front handle
- E) Chain break handle
- F) Break cover

## 2 Preparations

### Tools



- 1) Protective gloves
- 2) ESD bracelet
- 3) Torx wrench
- 4) Screw driver
- 5) Socket wrench
- 6) Shrink tubes for connectors

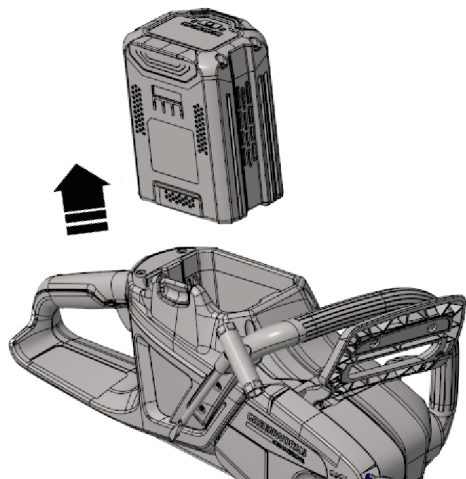
### Function test

After service and repair always conduct the following function tests:

- Check for error messages
- Check that chain is running freely
- Check chain lubrication
- Check the chain brake

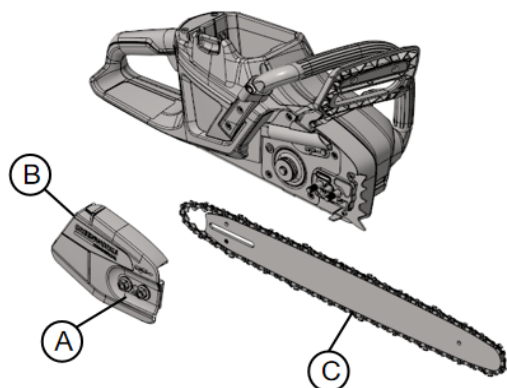
### Remove the battery

△ Always remove the battery before working on the chainsaw.



### 3 Chain disassembly

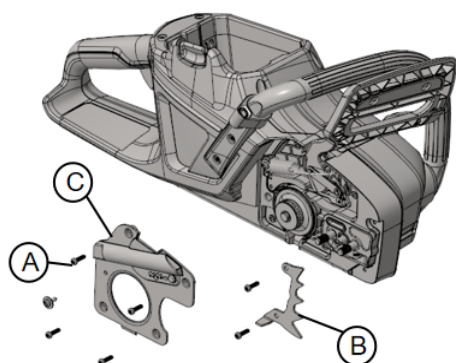
#### Chain disassembly



⚠ CAUTION!: SHARP OBJECTS. GLOVES REQUIRED.

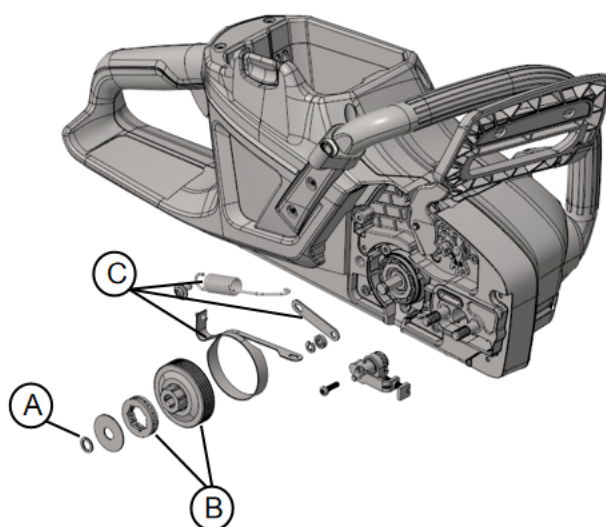
- 1) Loosen the captive nut and bolt (A).
- 2) Remove the cover (B).
- 4) Remove the chain and blade (C).

#### Chain brake cover and spikes



- 1) Remove the 7 screws (A).
- 2) Remove the steel plate (B) and spikes (C).

#### Chain brake assy and sprocket



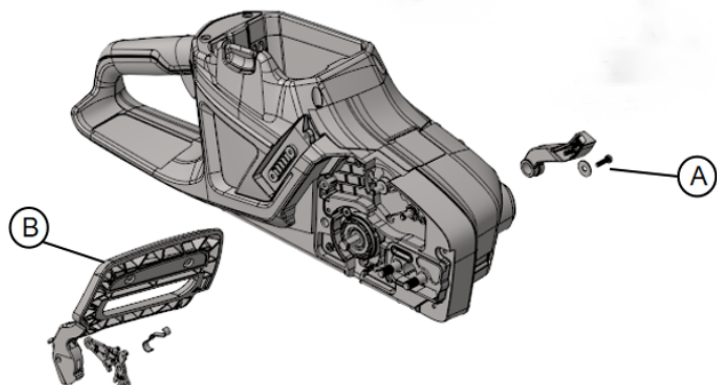
- 1) Activate the brake
- 2) Remove the clip (A).
- 3) Deactivate the brake.
- 4) Remove the washer and sprocket (B).
- 5) Remove the brakeband assembly (C) .

### 3 Chain disassembly

#### Brake handle

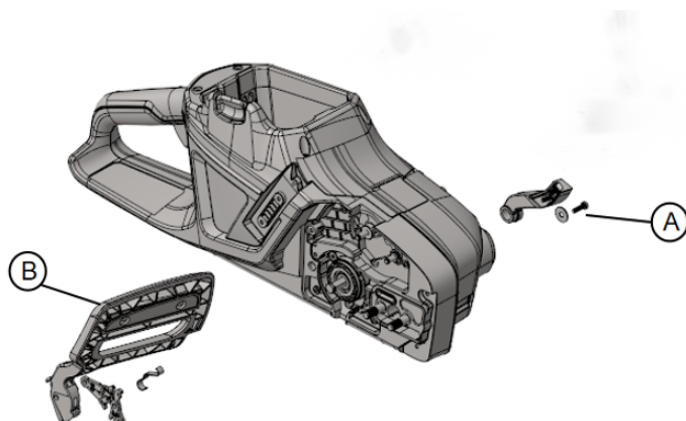
1) Remove the screw (A).

2) Remove the brake handle (B).



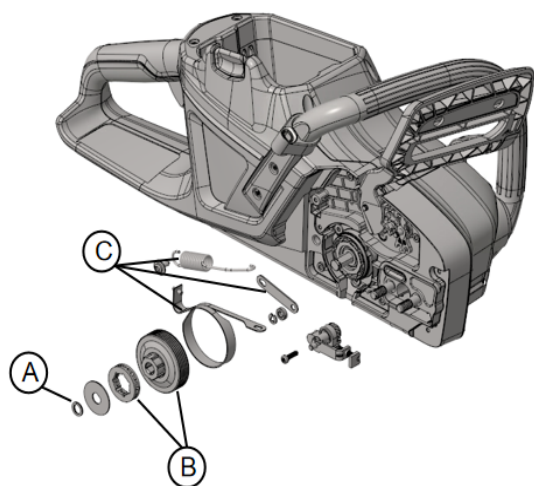
## 4 Chain assembly

### Brake handle



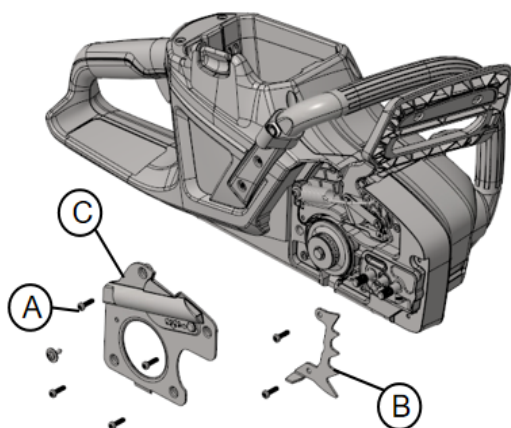
- 1) Fit the brake handle (B).
- 2) Fit the screw (A): 1,0 Nm

### Chain brake assy and sprocket



- 1) Fit the brakeband assembly (C) .
- 2) Deactivate the brake.
- 3) Fit the sprocket (B).
- 4) Activate the brake.
- 5) Fit the clip (A).

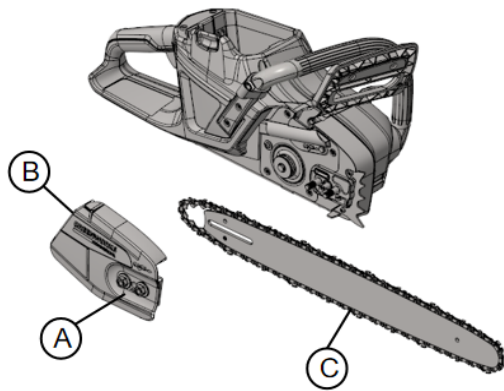
### Chain brake cover and spikes



- 1) Fit the steel plate (B) and spikes (C).
- 2) Fit the 7 screws (A) : 1,0 Nm

## 4 Chain assembly

### Chain assembly

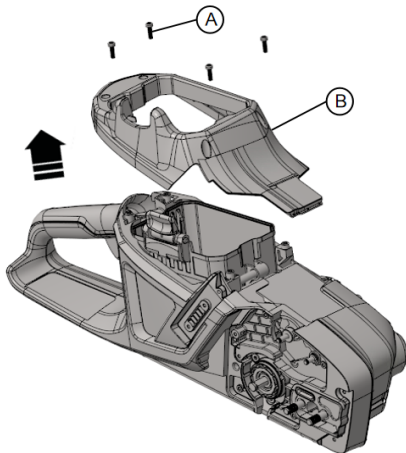


⚠ CAUTION!: SHARP OBJECTS. GLOVES REQUIRED.

- 1) Fit the chain and blade (C).
- 2) Fit the cover (B).
- 3) Tighten the captive nut and bolt (A).

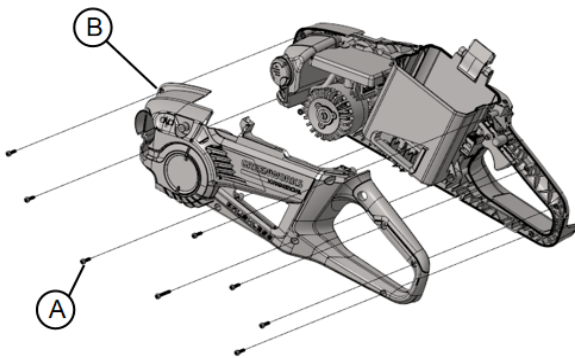
## 5 Motor disassembly

### Front cover



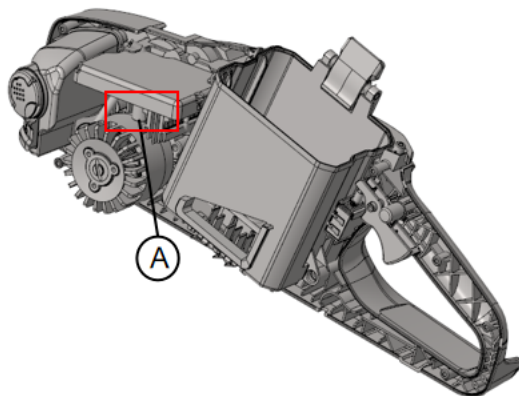
- 1) Remove the 4 screws (A).
- 2) Remove the front cover (B).

### Left cover



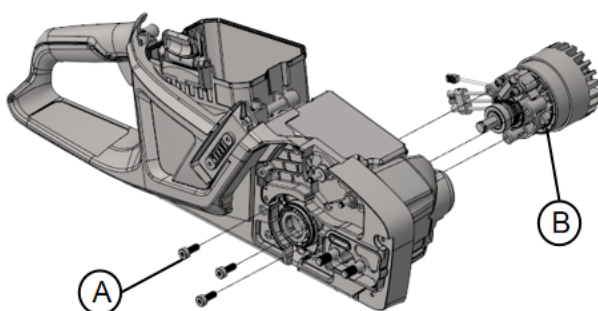
- 1) Remove the 8 screws (A).
- 2) Remove the left cover (B).

### Connector



Disconnect the connector (A) from the motor

### Motor

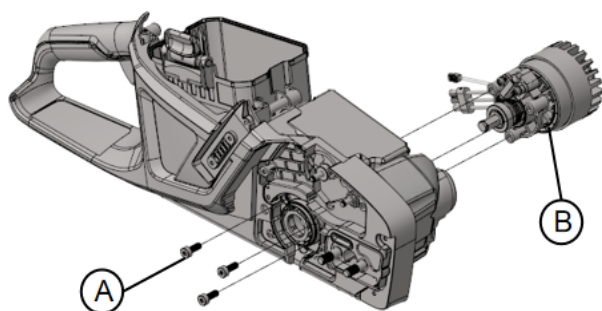


- 1) Remove the 3 screws (A).
- 2) Remove the motor (B).

## 6 Motor assembly

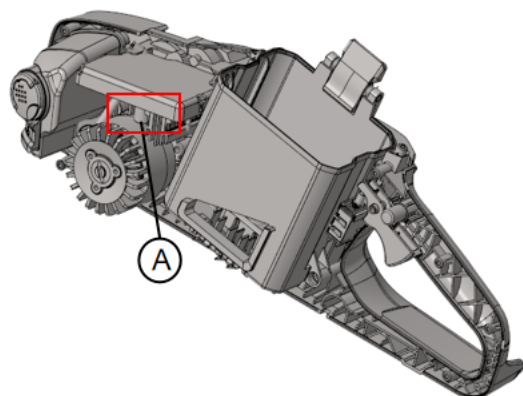
---

### Motor



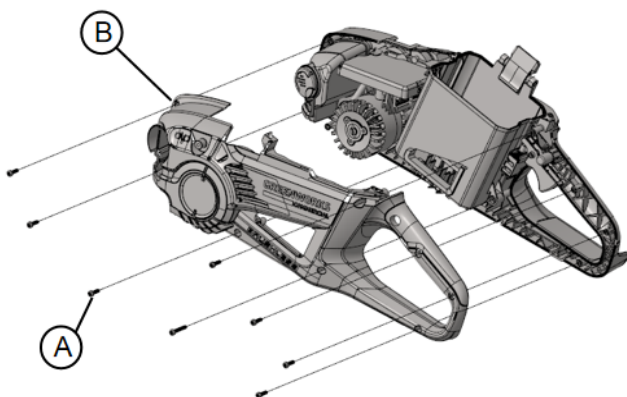
- 1) Fit the motor (B).
- 2) Fit the 3 screws (A) : 1,4 Nm

### Connector



Fit the connector A

### Left cover

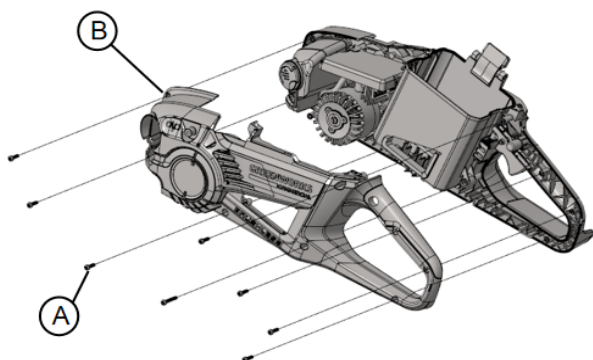


- 1) Fit the left cover (B).
- 2) Fit the 8 screws (A): 1,2 Nm

Fit the chain assembly according to  
Chapter "Chain assembly"

## 7 Battery box

### Remove left cover

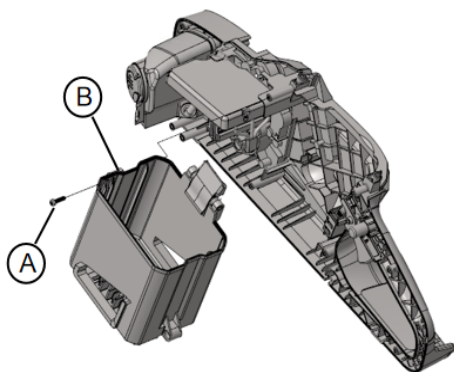


Remove the chain assembly according to

Chapter "Chain disassembly"

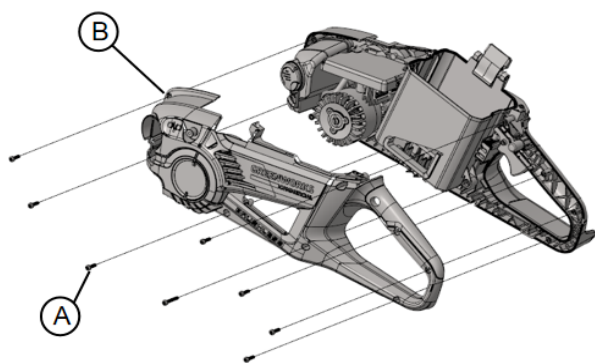
- 1) Remove the 8 screws (A).
- 2) Remove the left cover (B).

### Replace the battery box



- 1) Remove the screw (A).
- 2) Move the battery box (B) to uncover connectors
- 3) Disconnect the connector.
- 4) Replace the battery box (B).
- 5) Connect the connector.
- 6) Fit the battery box (B).

### Fit the left cover



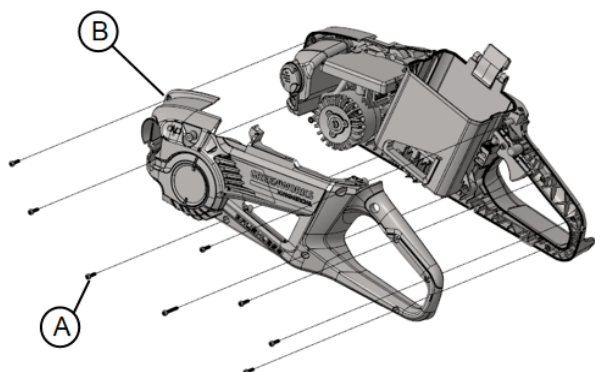
- 1) Fit the left cover.
- 2) Fit the 8 screws: : 1,2 Nm

Fit the chain assembly according to

Chapter "Chain assembly"

## 8 Oil tank

### Remove left cover

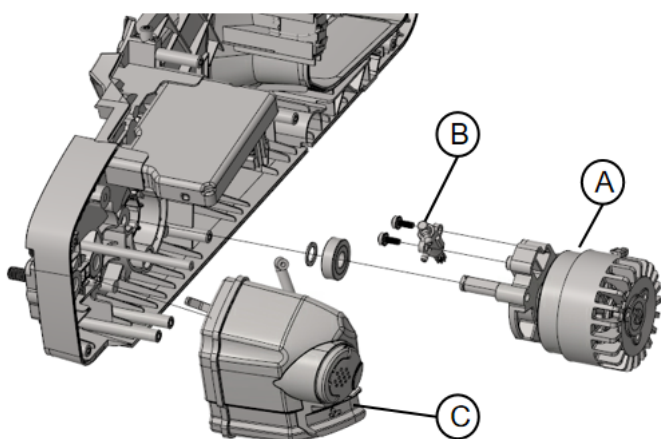


Remove the chain assembly according to

Chapter "Chain disassembly"

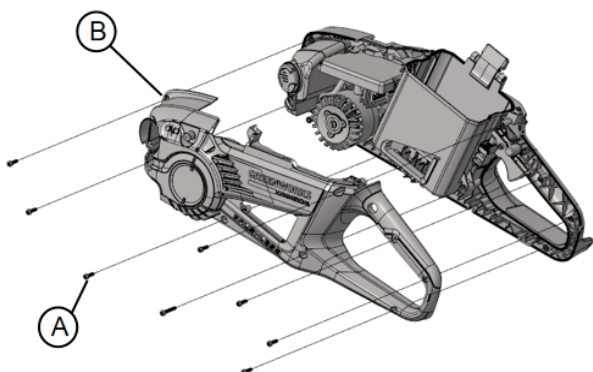
- 1) Remove the screws (A).
- 2) Remove the left cover (B).

### Replace the oil tank



- 1) Remove the motor (A).
- 2) Remove the oil tube (B).
- 3) Replace the oil tank (C).

### Fit the left cover



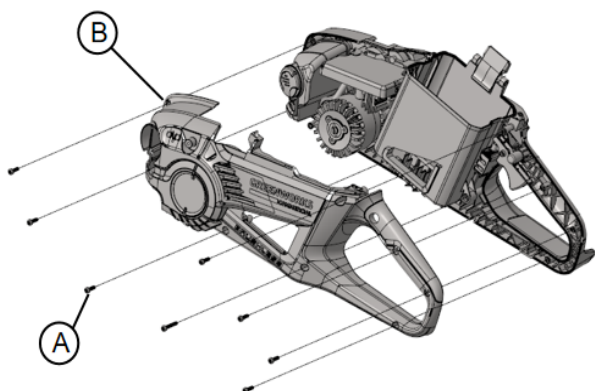
- 1) Fit the cover (B).
- 2) Fit the screws (A) : 1,2 Nm

Fit the chain assembly according to

Chapter "Chain assembly"

## 9 PCB

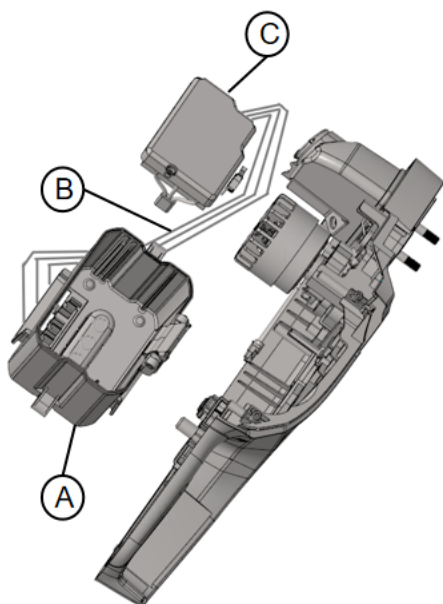
### Remove left cover



Remove the chain assembly according to Chapter: "Chain disassembly"

- 1) Remove the 8 screws (A).
- 2) Remove the left cover (B).

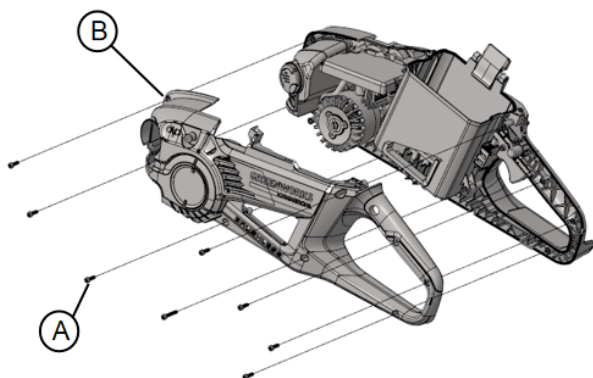
### Remove the battery box



- 1) Remove the battery box (A).
- 2) Disconnect the connector (B).
- 3) Replace the PCB (C).

## 10 Triggers and Potentiometers

### Remove the left cover

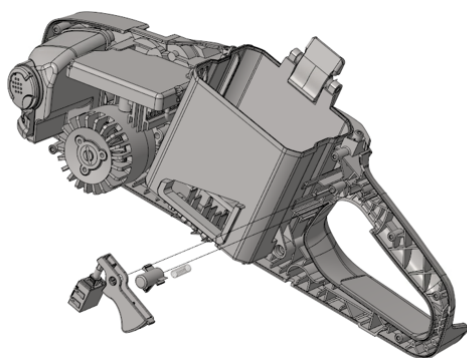


Remove the chain assembly according to

Chapter "Chain disassembly"

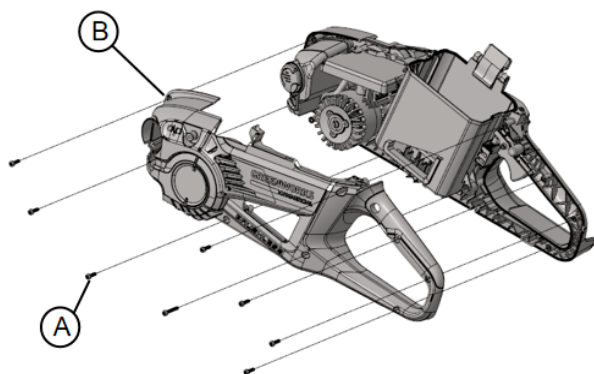
- 1) Remove the screws (A).
- 2) Remove the left cover (B).

### Replace trigger system



- 1) Disconnect the cables.
- 2) Replace the trigger.
- 3) Connect the cables.

### Fit the left cover



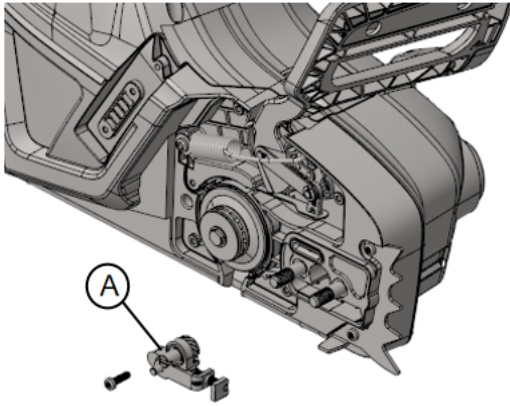
- 1) Fit the left cover.
- 2) Fit the screws: : 1,2 Nm

Fit the chain assembly according to

Chapter "Chain assembly"

## 11 Lubrication

### Chain tensioner



Grease:  
Eni Grease LP (NLGI 2), or similar.

Positions:  
1. Sprocket to chain tensioner (A).

## 12 Wiring diagram

